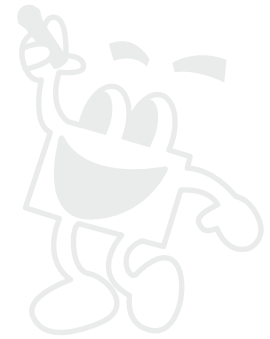




The world's famous brand name in Karaoke.



Specifications

INPUT/OUTPUT CHANNEL & SOCKET

- Source Input: AUX, VOD, BGM
- Microphone Input: 5 (Front x 3, Rear x 2)
- Video Inputs: 3 (RCA Jacks)
- Video Outputs: 1 (RCA Jack)
- Audio Inputs: 3 (RCA Jack x 2, Female XLR x 1)
- Audio Outputs: 6 (Male XLR x 4)
- Input Impedance: 20kΩ
- Output Impedance: 100Ω
- Pc Com Port: One USB Com Port on front panel
- Remote Control: One S Terminal on rear panel
- CMRR: >70dB (1KHz)
- Input Range: ≤+25dBu
- Frequency Response: 20Hz~20KHz (-0.5dB)
- S/N R: >110dB
- THD: <0.01% Output=0dBu / 1KHz
- Crosstalk of Channels: >80dB (1KHz)

FUNCTIONS OF INPUT CHANNELS

- Input Mute: Each channel has Independent Mute Control
- Input Delay: Each channel has Independent Delay Control Range: 0~30ms. stepover 0.1ms@<10ms; stepover 1ms@>10ms
- Input Polarity: Same Phase + or reversed Phase -
- Input EQ: Music and MIC are set with 9 Bands Parametric EQ. Central Frequency Point: 20Hz~20KHz, BandWidth: 0.01oct-3oct, stepover is 0.01oct. Default Frequency: EQ1 40Hz, EQ2 80Hz, EQ3 160Hz, EQ4 317Hz, EQ5 632Hz, EQ6 126Hz, EQ7 515Hz, EQ8 5018Hz, EQ9 10KHz. Also, high-cut and Low-cut filter is added.
- Input Gain: Both Music and MIC have independent Gain Control from 0% to 100%
- Limiter: Both Music and MIC have independent Limiter Control, -30dBu~+20dBu, stepover 0.1dBu
- Feedback: MIC comes with 4 levels Feedback functions

Noise Gate: Open range: -10dBu to -119dBu stepover 1dBu

FUNCTIONS OF OUTPUT CHANNELS

- Output Mute: Each channel has Independent Mute Control
- Output Polar: Same Phase + or reversed Phase -
- Output EQ: Each Output Channel can be set up as 7Bands EQ. Central Frequency Point: 20Hz~20KHz, BandWidth: 0.01oct-3oct, stepover is 0.01oct. Default Frequency: EQ1 47Hz, EQ2 112Hz, EQ3 266Hz, EQ4 631Hz, EQ5 1495Hz, EQ6 3544Hz, EQ7 8399Hz
- Output Gain: Each Channel has independent Gain Control. Adjustable Range: 0% to 100%, stepover 1%
- Output Delay: Each channel has Independent Delay Control. Range: 0~60ms; stepover 0.1ms@<10ms; stepover 1ms@>10ms
- Crossover: Each Channel can be set up LPF and HPF independently.
- Adjustable Parameters: Filter Types (Linkwitz-Riley/Besse/Butter-worth)
- Frequency Turning Point: 20Hz~20KHz, 239 Frequency Points
- Decay of Slope: 12dB/oct, 18dB/oct, 24dB/oct, 48dB/oct
- Limiter: Each Channel can be set up limiter independently. Adjustable Parameters: Threshold Value: -20dBu~+20dBu Stepover: 0.5dBu@starting time: 0.3ms~100ms Stepover<1ms@0.1ms, Stepover>1ms@1ms
- Effector: 1M of Memory ,3-Bands Parametric EQ guarantees Real Effect Processor
- Processor: 96KHz Sampling frequency, 32-bit Floating-Point DSP
- Display: With 144 x 32 LCD, 8-LED input/output level. Mute and Editing mode can be displayed.
- Power Consumption: ≤25W
- AC-Power: AC 110V/220V 50/60Hz

PHYSICAL DIMENSIONS

- Dimensions (WxHxD): 19x1.7x7.8 in / 48.3x4.4x19.7 cm
- Packing Dimensions (WxHxD): 22.1x3.9x11.6 in / 56.2x9.8x29.4 cm
- Net Weight: 7.8 Lbs / 3.5 Kg
- Shipping Weight: 10.6 Lbs / 4.8 Kg