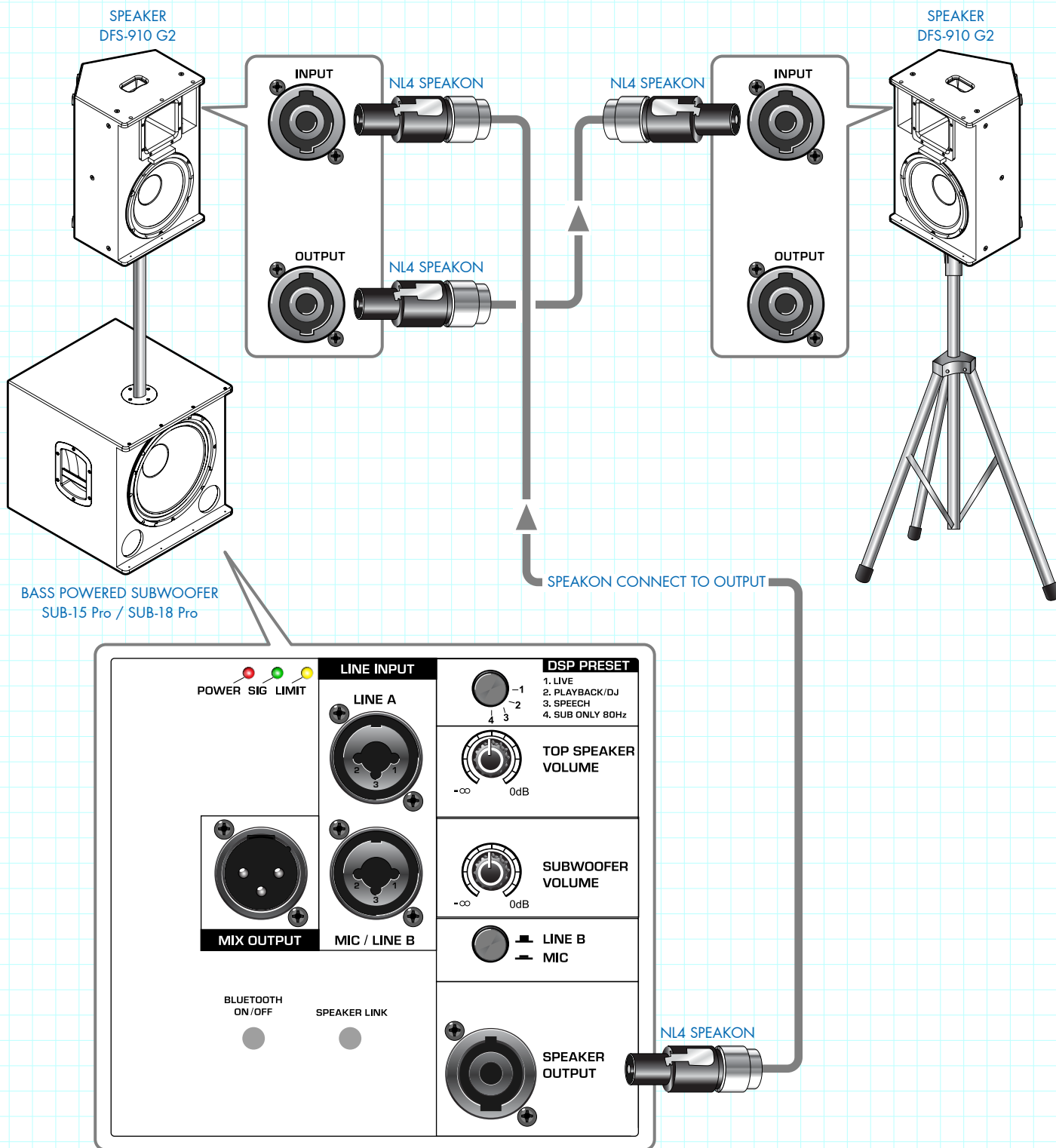




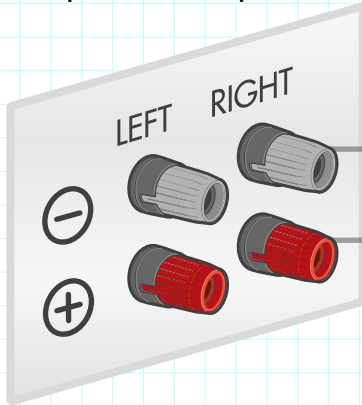
## DYNAMIC FUSION SYSTEM DFS-910 G2 (MEDIUM FORMAT)

There are two kinds of subwoofer: active/powered subwoofer and passive/non-powered subwoofer. For powered subwoofer, you need connecting it to mixer. For non-powered subwoofer, you need a power amplifier to

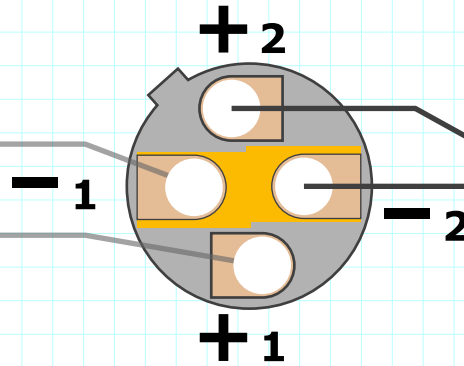
operate it. For high power output, you need a high power amplifier. Please consult with our authorized dealers for the technical aspects in details.



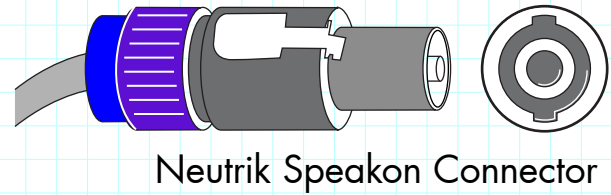
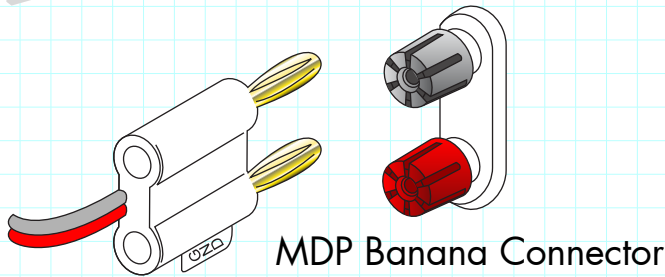
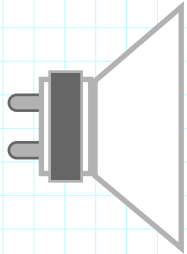
Amplifier Output



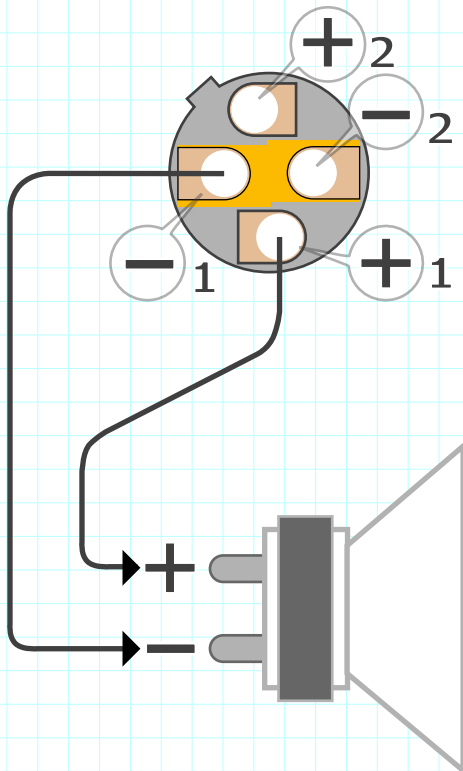
Speakon Connector



Speaker

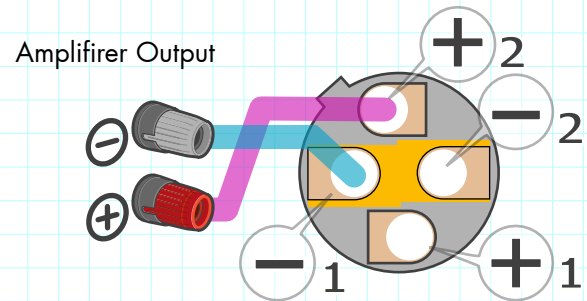


✓ Right Connection

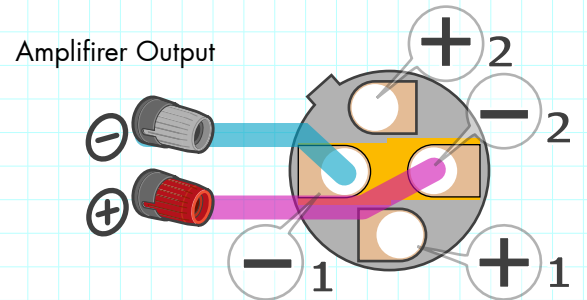


The positive one and negative one connect correctly to the speaker.

✗ Wrong Connection



The positive and negative are not connected on the same set.



The positive misconnected to the negative which will not work.